

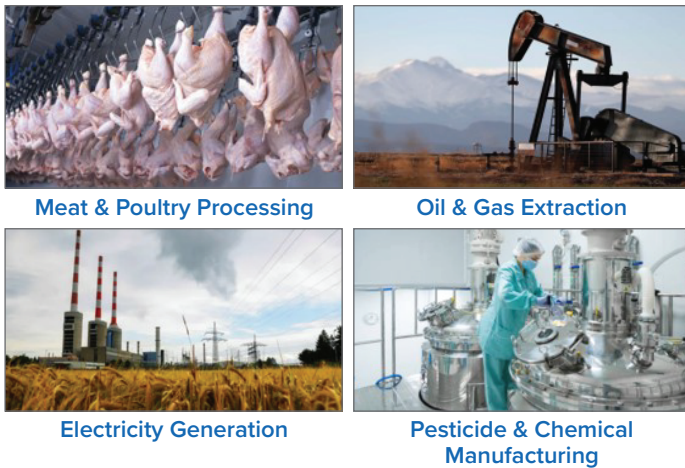
Join Listening Sessions to Shape the Steam Electric Rule

The U.S. Environmental Protection Agency (EPA) is a federal government agency whose mission is to protect human and environmental health. EPA can do this through laws that limit pollution from industrial sources into the environment.

Introduction

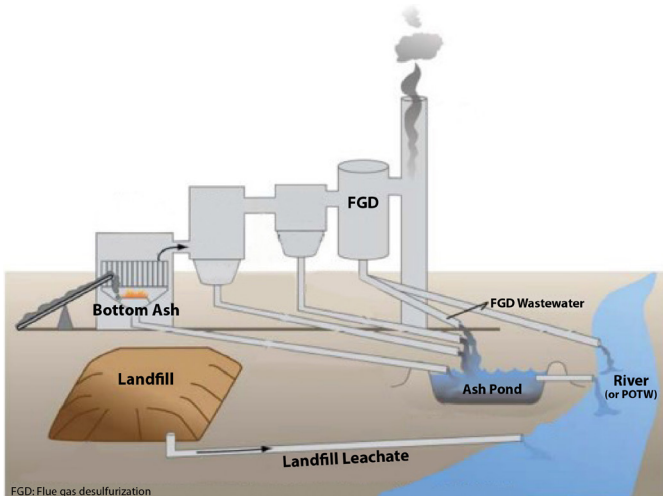
EPA's Effluent Limitations Guidelines (ELG) program sets national laws (regulations) to limit pollution into surface waters—like lakes, rivers, and streams—from industrial sources (Figure 1).

Figure 1: Examples of Industrial Sources Regulated by ELGs



In August 2021, EPA announced that it will be developing limits on polluted water released by power plants using coal (Figure 2). Power plants must clean any polluted water before it flows into nearby lakes, rivers, and streams.

Figure 2: Diagram of Polluted Water Created by Coal-fired Power Plants



Why Your Community's Input Matters

EPA is conducting an environmental justice (EJ) analysis to look at the pollution exposure for potentially affected communities. EPA would like to meet with community members to talk about the following topics:

1. Ideas and strategies for limiting pollution from power plants.
2. Concerns from community members related to power plants or other sources of pollution; nearby rivers, lakes, and streams; or their drinking water.
3. Community health, social or economic concerns.

How your Input Will be Used by EPA

EPA will consider community input as it develops the requirements for power plants. EPA will complete calculations (analysis) on pollution exposures and health effects across potentially affected communities.

EPA will post information for communities to its [Supplemental Steam Electric Rule website \(https://www.epa.gov/eg/2021-supplemental-steam-electric-rulemaking\)](https://www.epa.gov/eg/2021-supplemental-steam-electric-rulemaking) including:

- How EPA used the community input.
- The findings of the analysis.
- Next steps in the regulation process.
- Opportunities for communities to continue engagement with EPA.

Contact Information

Questions and Comments are Welcome!

If you have questions or comments on the Supplemental Steam Electric Rule, please contact:

Richard Benware

Email: benware.richard@epa.gov

Phone: 202.566.1369

If you have questions or comments on the EJ Analysis, please contact:

Julia Monsarrat

Email: monsarrat.julia@epa.gov

Phone: 202.566.2887